



RESIDENTIAL ESTATE AGENTS
PROPERTY LETTING & MANAGING AGENTS
VALUERS & PROPERTY CONSULTANTS
CHARTERED SURVEYORS

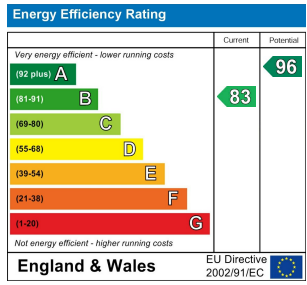
01722 336422
www.hwwhite.co.uk WEB



Sheppard Lane,

£1,450

17 Sheppard Lane, Salisbury, Wiltshire, SP2 9FX



This well presented three bedroom house on the outskirts of Salisbury offers a wonderful opportunity to live in a highly energy efficient property surrounded by countryside but also within driving distance to Salisbury city centre. The property comprises a lounge, kitchen diner with double glass patio doors leading out into a private fenced garden. Upstairs the property has three bedrooms, one bathroom and master bedroom with built-in storage and ensuite shower room. Additionally, the property comes with two off-road parking bays next to the property. UNFURNISHED.

A Note From the Whites Letting Team

Thank you for considering Whites as your letting agent. As a proud member of the Royal Institution of Chartered Surveyors (RICS), we aspire to uphold its core values by providing a fair, efficient, and transparent service for all prospective tenants. Below we've outlined how we manage property enquiries and applications to help set expectations and guide you through the letting application process.

To begin the process of enquiring about one of our properties, please click the 'Request Further Details/Info' button on the property listing. This will send us your contact information, and we'll get back to you as soon as possible with a short questionnaire to complete. Once we've received your completed questionnaire, your enquiry will be registered with the relevant Property Manager. Please note, only those who complete this step will be considered as having formally enquired about the property.

Due to the high level of interest we often receive, we regret that we aren't often able to offer everyone a viewing. Where possible, we handle enquiries in the order they are received expectat

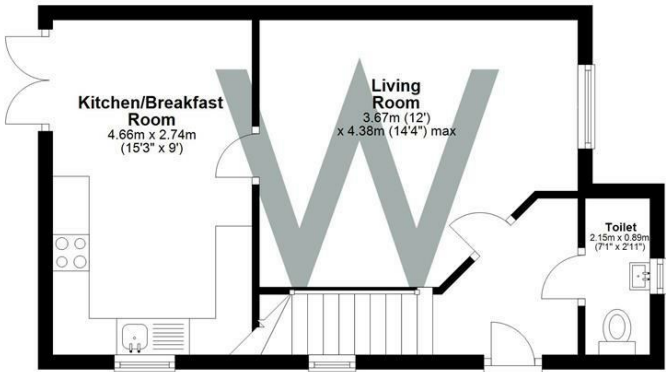
Please r on its m

The avai

red

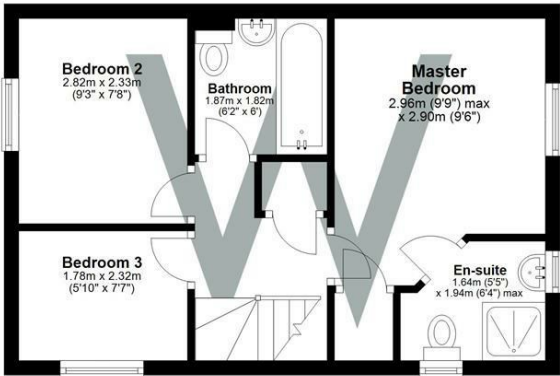
Ground Floor

Approx. 35.5 sq. metres (382.2 sq. feet)



First Floor

Approx. 34.1 sq. metres (366.6 sq. feet)



01722 336422

47 Castle Street, Salisbury SP1 3SP 01722 320600 FAX
residential-sales@hwwhite.co.uk E-MAIL www.hwwhite.co.uk WEB